



A STORIED HISTORY
WITH AN EVEN BRIGHTER FUTURE

SINCE 1937

NATIONWIDE FAMILY-OWNED MANUFACTURER
OF KITCHEN & BATH CABINETRY



Made in USA

COMING
SOON
2019

White

BY KITCHEN KOMPACT



Our recessed panel, Shaker style cabinets will soon be available in painted white. This painted wood door style enables a variety of design options with countertops, flooring and decorative backsplashes. Door pulls not included.



Loyalty @kitchenkompact

Our employees average 15 years of service!



kitchenkompact.com



GLENWOOD



For those who want a darker, chocolate color and up-to-date Shaker style, choose our best selling line, **Glenwood**. The clean, well-defined edges and ***recessed panel*** doors bring a touch of elegance to your home. Door pulls not included.



Location @kitchencompact

We are located in Jeffersonville, Indiana, across the Ohio River from Louisville, Kentucky.



kitchencompact.com



WARMWOOD



Not as dark as Glenwood, **Warmwood's** chestnut brownish tone, clean lines and **recessed panel** doors give you another choice in our most popular Shaker style. Door pulls not included.



American-Made @kitchencompact

Our cabinets are proudly made in the USA!



kitchencompact.com



CHADWOOD



A traditional classic with a golden oak finish, **Chadwood** is right at home in any kitchen. With its *oak recessed panel* doors, **Chadwood** can be designed and accessorized to fit any need, taste or budget. Door pulls not included.



Family @kitchencompact

Founded by Dwight Gahm, we are now joined by a third generation!



kitchencompact.com

The Enduring Beauty of Wood

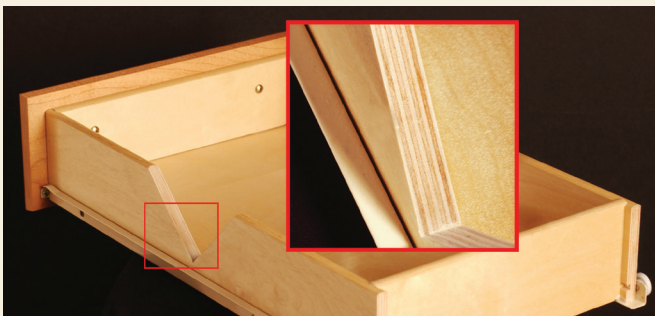


There's solid wood durability built into every KK cabinet. From the oak, maple or beech on the doors to the solid pine corner blocks on the base cabinets, each cabinet is built to last. Note these quality features:

- All frames are built of solid 3/4" hardwoods. Each rail is kiln-dried, joined by mortise and tenon, and then glued for added strength.
- Solid wood toe kicks, 3/4" thick.
- Solid wood hanging strips on wall and base cabinets, located at the top and bottom.
- End panels consist of 3-ply construction, 1/2" thick engineered wood core with hardwood veneers.

All cabinets get stained and sealed and are protected with a durable topcoat. The result is a surface that is virtually "family-proof," resisting many household chemicals, water, alcoholic beverages, mild acids and even nail polish.

The result is more than just a kitchen you can cook in—it's a kitchen you can live in at a price you can live with.



And there's more. All Kitchen Kompact cabinets feature plywood drawers as a standard. A front-to-back epoxy-coated drawer system is securely attached to a solid wood strip in the back of the cabinet for stability, and years of smooth operation. We also offer universal design cabinets.

Kitchen Kompact, Inc. reserves the right to change design, specifications or materials without being obliged to incorporate such changes in products of prior manufacture. The artwork and specifications contained herein are the property of Kitchen Kompact, Inc. and may not be copied or reproduced without the written consent of the company.

A physical sample must be viewed for actual color of cabinetry.

Custom Touches

These accessories, available for KK cabinets, give any kitchen a custom look. Ask your dealer for details.

pantry roll-out trays



base roll-out trays



Accessory Match stem glass holder



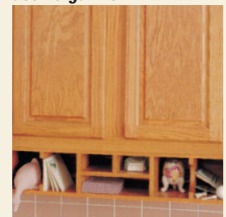
crown moulding



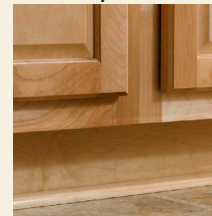
Accessory Match lattice wine rack



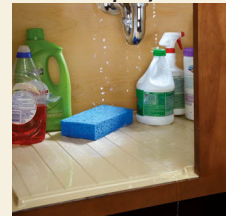
Accessory Match desk organizer



toe kick & quarter round



Rev-A-Shelf undersink drip tray



Rev-A-Shelf half moon shelf



Rev-A-Shelf pull-out filler

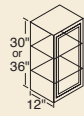


For more photos and information, visit us online!

accessorymatch.com
(260) 495-2501
cabinet-mart.com
(417) 799-0297

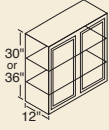
rev-a-shelf.com
(800) 626-1126

WALL Cabinets



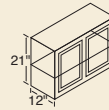
36" High

- 12WT* 27WT
- 15W* 30W
- 18W* 33W
- 21W* 36W
- 24W* 42W



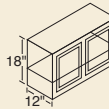
30" High

- 9W* 27W
- 12W* 30W
- 15W* 33W
- 18W* 36W
- 21W* 42W
- 24W* 48W



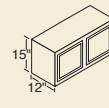
21" High

- 24R* 36R
- 30R 42R



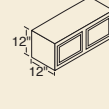
18" High

- 24Y* 36Y
- 30Y 42Y



15" High

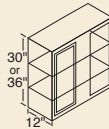
- 30X 36X
- 33X 39X



12" High

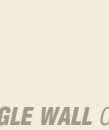
- 30X12
- 36X12

WALL CORNER Cabinets



36" High

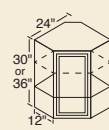
- 24WCT* 36WCT*



30" High

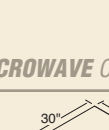
- 24WC* 42WC
 - 36WC* 48WC
 - 39WC
- All can be pulled 4-1/2".

ANGLE WALL Cabinets



36" High

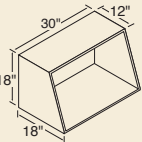
- 24AT



30" High

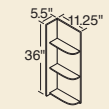
- 24A

MICROWAVE Cabinet



- 30MW
- For proper height, install under a 30X cabinet.

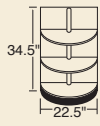
WALL WHATNOT Cabinet



36" High

- WWN
- Trim to desired height and width.

BASE WHATNOT Cabinet

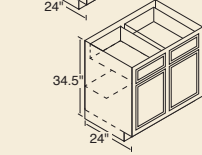


- BWN

BASE Cabinets

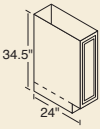


- 12B* 30B
- 15B* 33B†
- 18B* 36B
- 21B* 42B
- 24B* 48B
- 27B*†



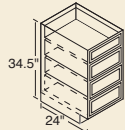
† 3" side stiles.

TRAY Cabinet



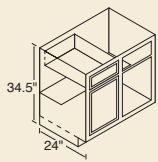
- 9T

DRAWER Cabinets

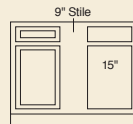
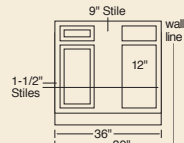


- 15D 24D
- 18D

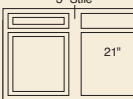
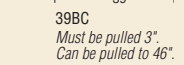
BASE CORNER Cabinets



- 39BC 48BC
- 42BC

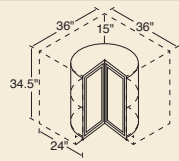


- 42BC
- Can be pulled to 49".



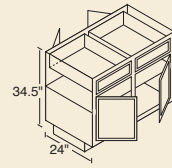
- 48BC
- Can be pulled to 49".

LAZY SUSAN CORNER Cabinet



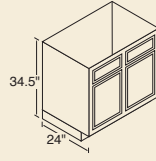
- 36LS
- Shipped without finished ends.

PENINSULA BASE Cabinets



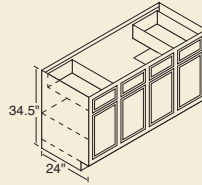
- 36B-P 48B-P
 - 48BC-P
- BC-P** indicates Blind Corner Peninsula.

RANGE & SINK BASE Cabinets



- 30RBS 36RBS
 - 33RBS† 42RBS
- † 3" side stiles.

SINK BASE Cabinets



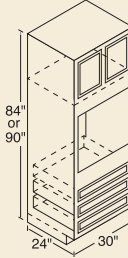
- 60SB 72SB
- No shelf under sink - no back.

SINK FRONTS



- 18SF†
- † Square edge.

OVEN Cabinets



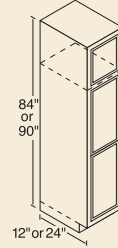
90" High

- 30OUT

84" High

- 300U

BROOM Cabinets



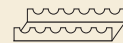
90" High

- 18BRW (12" deep)
- 18BRB (24" deep)
- 24BRB (24" deep)

84" High

- 18BRW (12" deep)
 - 18BRB (24" deep)
 - 24BRB (24" deep)
- No shelves included with broom cabinets. **Optional Shelf Kit** available.

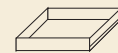
ACCESSORIES



- Wine Rack (kit)



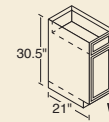
- Appliance Garage
- To fit beneath 24A.



- Pantry/Base Roll-Out Tray
- 15BT 18BT 24BT

VANITY Cabinets

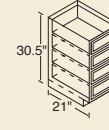
30.5" Standard



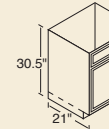
- V12B

- V12B V36SD
- V15D V42S†
- V24S V48S†
- V30S V30KH††

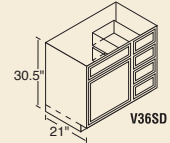
† Two outside working drawers.
†† Can be cut down 3" on each side.



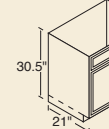
- V15D



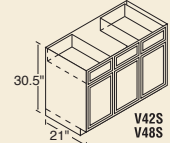
- V24S



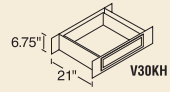
- V36SD



- V30S



- V42S
- V48S



- 6.75"†
- V30KH

VANITY Cabinets

34.5" Tall

Tall vanities are only available for Glenwood and Warmwood.

- V12BT V36SDT
- V15DT V42ST†
- V24ST V48ST†
- V30ST

† Two outside working drawers.

All Standard and Tall Vanities 21" Deep

ADA ACCESSIBLE Cabinets

ADA accessible cabinets are available, on special order, in a limited number of sizes.

Cabinet Code Descriptions

For ease of ordering, the numerical designation indicates the cabinet width, the letter identifies the height.

* Single door.



Kitchen Kompact, Inc.
911 East 11th St. (47130)
P.O. Box 868
Jeffersonville, IN 47131-0868
(812) 282-6681 Phone
(812) 282-7880 Fax

kitchenkompact.com



Kitchen Kompact is certified under the Kitchen Cabinet Manufacturers Association's Environmental Stewardship Program™.

™ This certification has been recognized by the National Association of Home Builders (NAHB) with the Green Building Award for Advocate of the Year for its environmental and sustainability achievements.



Kitchen Kompact, Inc.
911 East 11th St. (47130)
P.O. Box 868
Jeffersonville, IN 47131-0868
(812) 282-6681 Phone
(812) 282-7880 Fax

kitchenkompact.com



Kitchen Kompact is certified under the Kitchen Cabinet Manufacturers Association's Environmental Stewardship Program**.

** This certification has been recognized by the National Association of Home Builders' (NAHB) with the Green Building Award for Advocate of the Year for its environmental and sustainability achievements.